

**ADDENDUM #6  
MAY 23, 2024**

**REQUEST FOR TENDER FOR  
REGIONAL LANDFILL CELL 5 NORTH CONSTRUCTION  
CONTRACT 9-2024 APRIL 2024  
ESSEX-WINDSOR SOLID WASTE AUTHORITY**

Please be advised that this **Addendum #6** is provided to inform the plan takers of the following responses to questions, and revisions to the tender package:

1. Question 1: There is no current LPB in the location shown on the drawing, please clarify?

*Response: Panel LP-A and Panel LP-B are new and are to be provided as part of this project tender.*

2. Question 2: What is being supplied for new pump panel, especially controls?

*Response: No controls are required, just receptacles to connect to the pumps that will be provided by the owner.*

3. Question 3: On site contact feels there are cameras in at least three locations; compost pad, scrap metal storage and hazardous waste area. Please confirm?

*Response: Conduits as shown on site plan are to be provided for future use by the owner. No cameras are to be provided by the contractor. Any additional work will be addressed by a change order for the selected contractor.*

4. Question 4: What type of 600-volt receptacles are required from panel LP-A?

*Response: Receptacles as per drawings and are 600V AC, 3 phase, additional stepdown transformer shall be added for single phase 220V AC pumps. Drawings are updated as attached to this addendum.*

5. Question 5: Are existing post mounted receptacles located beside existing PCP to be relocated?

*Response: No relocation of existing equipment is required.*

6. Question 6: Drawing E01 labelled varied electrical trench names (i.e., Trench 'A', etc.). Please provide details for each Trench Name label. How many ducts, Size of ducts, etc.? Are they all same detail as "Secondary Ducts" as shown on drawing E02?

*Response: Yes, each trench shown on Drawings E01 and E02 share the same construction details. Each trench contains a total of 4 ducts with an inner diameter of 2 inches. Please see the updated Drawings.*

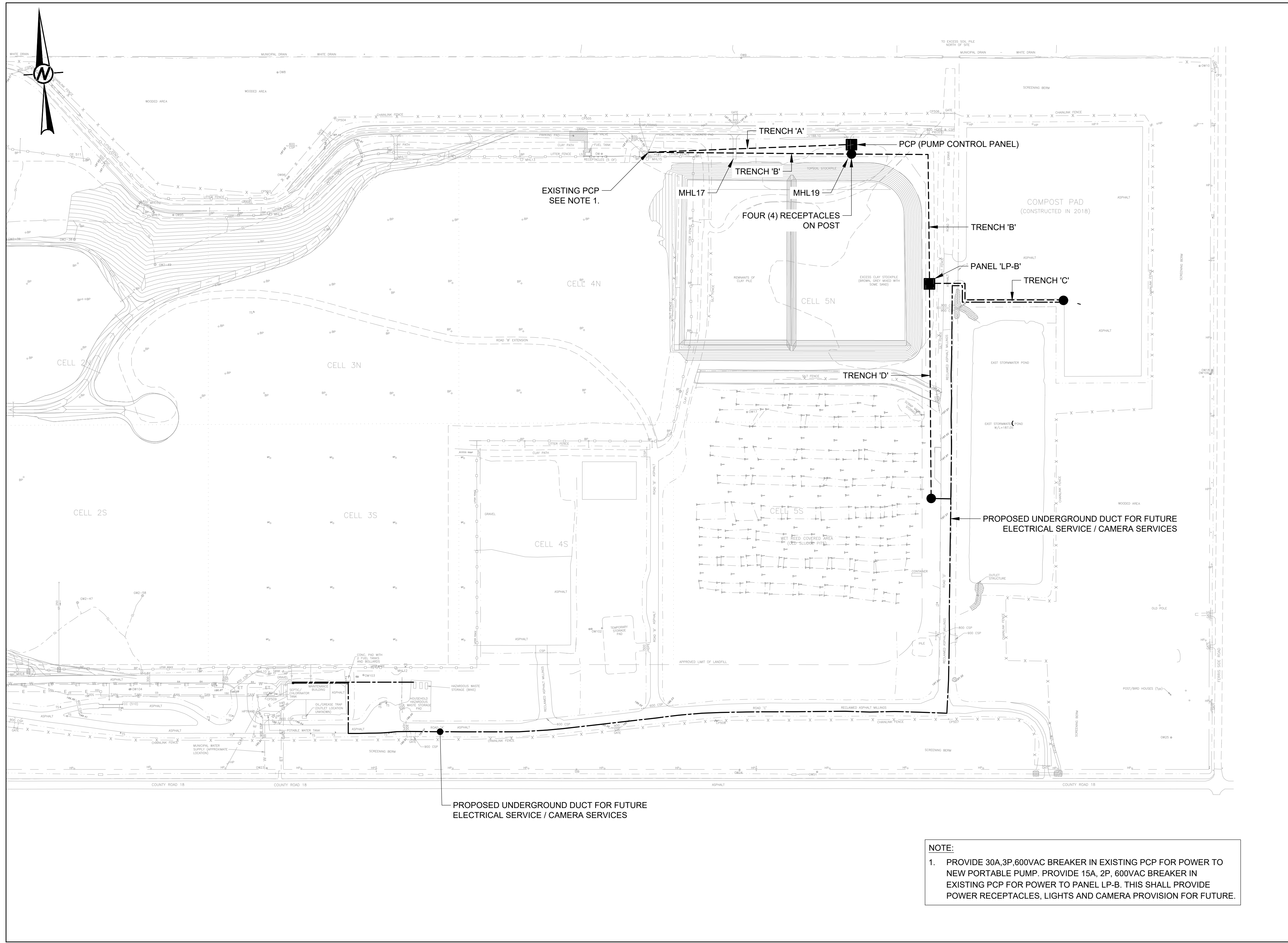
7. Question 7: We kindly ask again that a consideration for alternative supplier / product be looked at, since the spec supplier cannot / will not provide quote due to the site being out of their area of service.

*Response: Unfortunately, it is the responsibility of the contractor to bid and cost the items as specified at this time. Alternative products may be submitted for review and approval under shop drawings submittals and may be considered during construction after the project is awarded if the specified products are no longer available in the market.*

The plan takers are also advised about the following changes to the tender drawings and specifications.

1. The data conduit layout has been updated to allow for an extension across the existing east perimeter to the southwest corner of the new truck clean out area. The updated drawings showing this change are attached.
2. The following Drawings have been updated and are attached to this addendum: Drawings E01 and E02.
3. The contract Working Day Limit is now increased from **130 to 160 days** to allow for the additional work outlined in the issued addendums. Please note that any reference to the Working Day Limit in any issued tender package document is hereby increased from **130 to 160 Working Days**.

Path: \\gdrive.gfs.com\planning\office\Ontario\GIS\Clients\Essex\Windsor\_Solid\_Waste\_Authority\Essex\Windsor\_Solid\_Waste\_Authority\Essex\Windsor\_Regional\_Landfill\11-53107-ELEC\_WPK.dwg | File Name: 11-53107-ELEC\_WPK.dwg | Labels Edited By: matthew.kamphuis | Date: 2024-05-23 | Time: 7:28:52 AM  
 Path: \\gdrive.gfs.com\planning\office\Ontario\GIS\Clients\Essex\Windsor\_Solid\_Waste\_Authority\Essex\Windsor\_Solid\_Waste\_Authority\Essex\Windsor\_Regional\_Landfill\11-53107-ELEC\_WPK.dwg | File Name: 11-53107-ELEC\_WPK.dwg | Labels Edited By: matthew.kamphuis | Date: 2024-05-23 | Time: 7:27:49 AM | Time: 7:28:52 AM

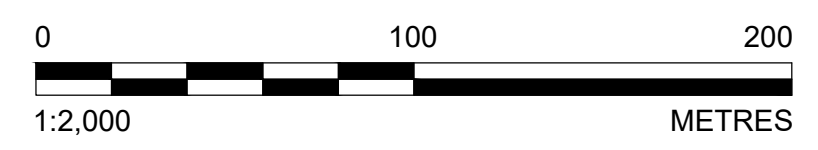


**LEGEND**

- PROPOSED ELECTRICAL PANEL
- PROPOSED POWER OUTLET
- - - - - PROPOSED UNDERGROUND DUCT AND WIRING
- — — — — PROPOSED UNDERGROUND 4 INCH FIBER CONDUIT

**NOTE:**

1. PROVIDE 30A, 3P, 600VAC BREAKER IN EXISTING PCP FOR POWER TO NEW PORTABLE PUMP. PROVIDE 15A, 2P, 600VAC BREAKER IN EXISTING PCP FOR POWER TO PANEL LP-B. THIS SHALL PROVIDE POWER RECEPTACLES, LIGHTS AND CAMERA PROVISION FOR FUTURE.



REV.	YYYY-MM-DD	DESCRIPTION	DESIGNED	PREPARED	REVIEWED	APPROVED
B	2024-04-12	ISSUED FOR TENDER	MN	MK	MN	MN
A	2023-02-28	ISSUED FOR CLIENT REVIEW	MN	MK	MN	MN

SEAL

M. N. BADANA  
100089066  
PROVINCE OF ONTARIO

CLIENT

ESSEX-WINDSOR REGIONAL LANDFILL

CONSULTANT

WSP CANADA INC.  
1821 PROVINCIAL ROAD, SUITE 100  
WINDSOR, ONTARIO N8W 5V7  
CANADA  
[+1] (226) 826 0702

PROJECT  
ESSEX-WINDSOR REGIONAL LANDFILL  
CELL 5 NORTH CONSTRUCTION

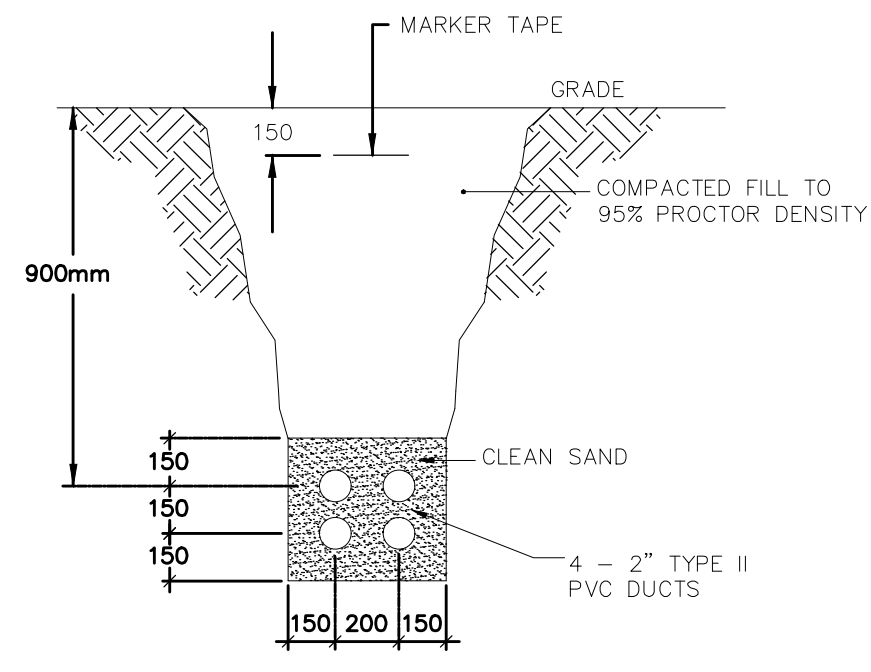
TITLE  
**PROPOSED ELECTRICAL WORKS**

PROJECT NO. 111-53107-10	CONTROL 2001	REV. B	28 of 29	DRAWING E01
-----------------------------	-----------------	-----------	----------	----------------

25 mm IF THIS MEASUREMENT DOES NOT MATCH WHAT IS SHOWN, THE SHEET SIZE HAS BEEN MODIFIED FROM ANSI D

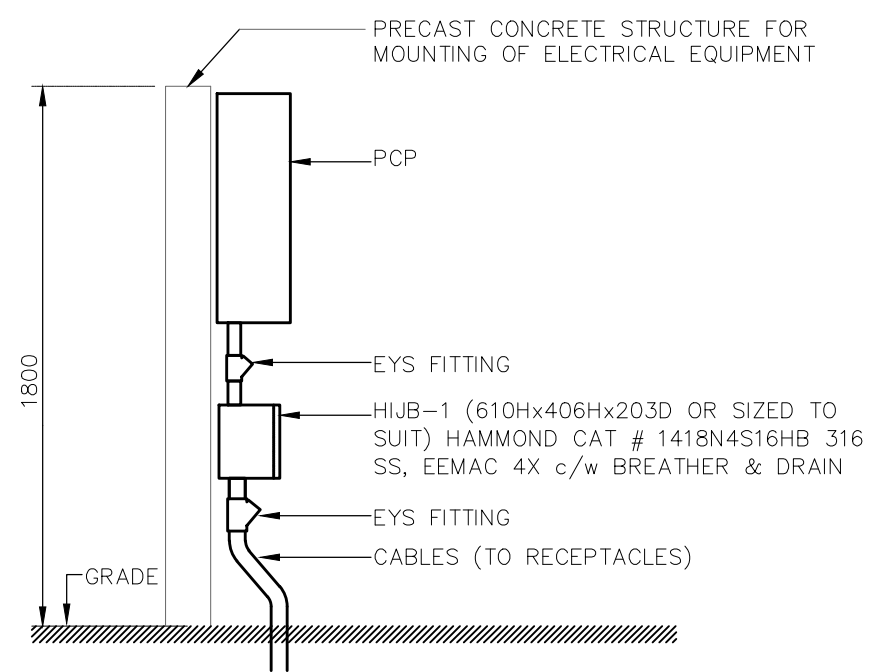
Path: \\gdrive.gfs.com\planning\office\Ontario\SI\Projects\Essex-Windsor\_Regional\_Landfill\09\_PROJ\1153107-10\_LP\_Design\40\_FRCD\0001\_Call\_BN\_Design1 File Name: 1153107-ELEC\_WPK.dwg | Last Edited By: matthew.kamphuis Date: 2024-05-23 Time: 7:29:59 AM | Printed By: matthew.kamphuis Date: 2024-05-23 Time: 8:05:05 AM

- NOTES:
1. PCP (PUMP CONTROL PANEL) SHALL BE SUPPLIED BY PUMP MANUFACTURER.
  2. ALL CABLES ENTERING THE PANEL FROM THE WET SHALL BE EGROSS WITH EYS SEALS.
  3. PCP SHALL BE ADEQUATELY VENTILATED FOR SUMMER AND WINTER TEMPERATURES.
  4. THE TEMPERATURE INSIDE THE PCP SHALL BE MAINTAINED FOR PROPER FUNCTIONING OF THE EQUIPMENT INSIDE THE PANEL.



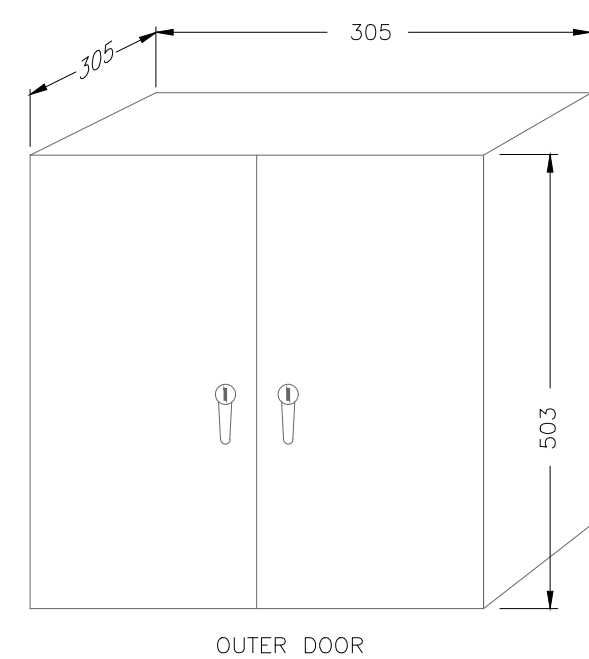
**SECONDARY DUCT BEDDING**

N.T.S.



**PUMP STATION PS3 MOUNTING DETAILS**

N.T.S.



**ELECTRICAL PANEL PCP-3**

N.T.S.  
SIZED TO SUIT, EEMAC 4X, 316 S.S.

PANELBOARD DESIGNATION LP-A LOCATION PCP 3 MIN. INTERRUPTING CAPABILITY 5 KA RMS SYMMETRICAL  
 SERVICE 600VAC VOLTS, 3 PHASE, 4 WIRE, MOUNTING PANEL FLUSH,            SURFACE            IN MCC  
100 AMP MAIN LUGS, 40 AMP MAIN BREAKER

CIRCLE AROUND CIRCUIT No. INDICATES HANDLE LOCKING DEVICE  
 \* INDICATES SHUNT TRIP

CCT	DESCRIPTION	VOLT-AMPERES			POLE AMP	WIRE SIZE	AMP POLE	VOLT-AMPERES			DESCRIPTION	CCT	
		A	B	C				A	B	C			
1		200			3	15	12	12	15	1	200	RECEPTACLE 1	2
3	RECEPTACLE FOR PORTABLE PUMP		200		3	15	12	12	15	1	200	RECEPTACLE 1	4
5				200				12	15	1		RECEPTACLE 1	6
7								12	15	1		SPARE	8
9	TRANSFORMER T1				3	15	12	12	15	1		SPARE	10
11												SPACE	12
13												SPACE	14
15												SPACE	16
17												SPACE	18
19												SPACE	20
21												SPACE	22
23												SPACE	24
SUB-TOTAL VA		200	200	200				600	200	200	200		
GRAND TOTAL VA 1650		DEMAND FACTOR 90 %			TOTAL AMPERES 4.5A								

PANELBOARD DESIGNATION LP-B LOCATION PANEL (LP-B) MIN. INTERRUPTING CAPABILITY 5 KA RMS SYMMETRICAL  
 SERVICE 240/120 VOLTS, 1 PHASE, 3 WIRE, MOUNTING PANEL FLUSH,            SURFACE            IN MCC  
100 AMP MAIN LUGS, 40 AMP MAIN BREAKER

CIRCLE AROUND CIRCUIT No. INDICATES HANDLE LOCKING DEVICE  
 \* INDICATES SHUNT TRIP

CCT	DESCRIPTION	VOLT-AMPERES		POLE AMP	WIRE SIZE	AMP POLE	VOLT-AMPERES		DESCRIPTION	CCT			
		A	B				A	B					
1	RECEPTACLE	100		1	15	12	12	15	1	100	LUMINAIRE ON POLE	2	
3	RECEPTACLE		100	1	15	12	12	15	1		CAMERA	4	
5	RECEPTACLE	100		1	15	12	12	15	1	100	SPARE	6	
7	SPARE			1	15	12	12	15	1		SPARE	8	
9	SPARE			1	15		12	15	1		SPARE	10	
11	SPARE			1	15						SPACE	12	
13											SPACE	14	
15											SPACE	16	
17											SPACE	18	
19											SPACE	20	
21											SPACE	22	
23											SPACE	24	
SUB-TOTAL VA		200	100	300			300	200	100				
GRAND TOTAL VA 1650		DEMAND FACTOR 90 %			TOTAL AMPERES 4.5A								

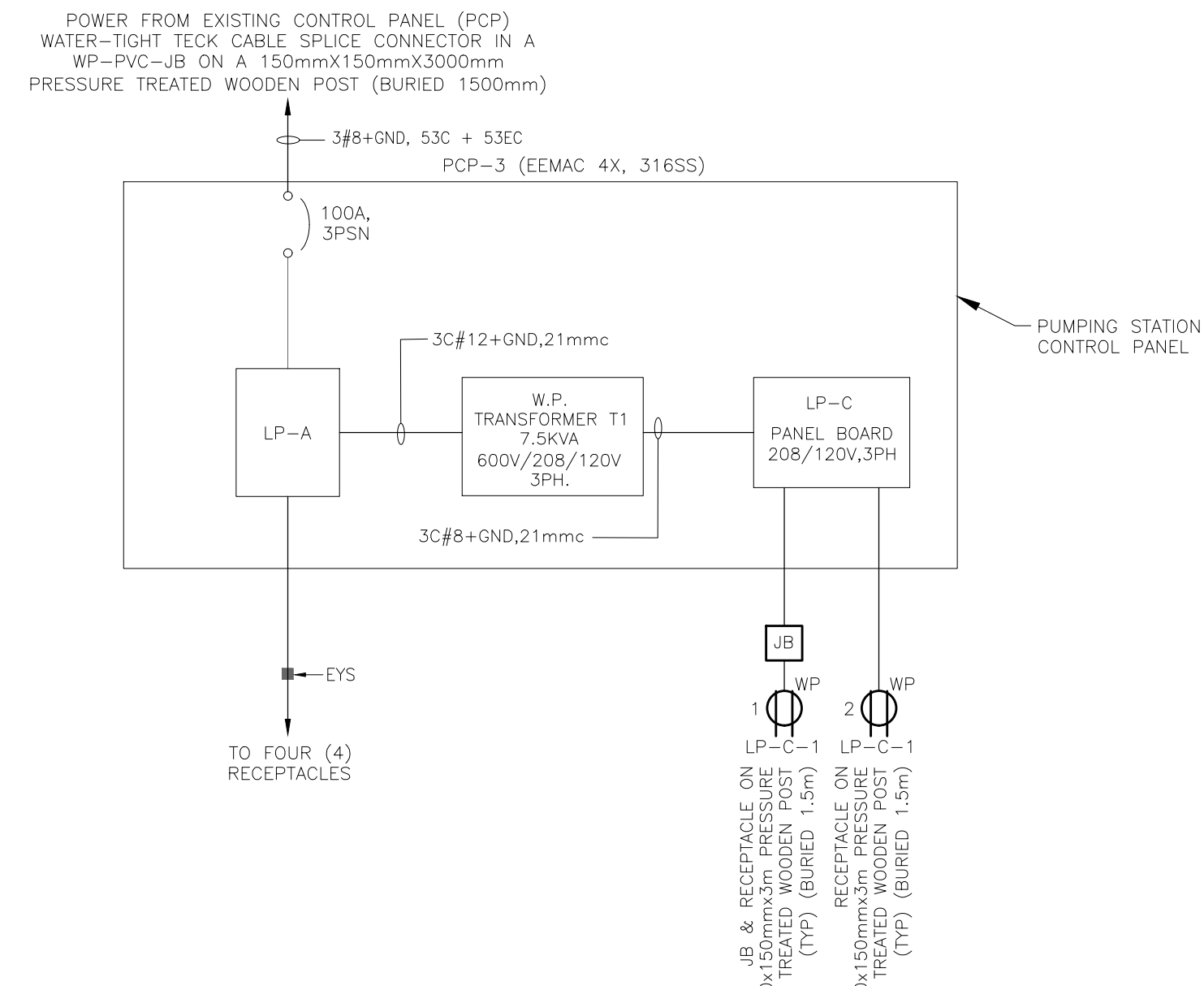
PANELBOARD DESIGNATION LP-C LOCATION PCP 3 MIN. INTERRUPTING CAPABILITY 5 KA RMS SYMMETRICAL  
 SERVICE 208/120 VOLTS, 3 PHASE, 3 WIRE, MOUNTING PANEL FLUSH,            SURFACE            IN MCC  
100 AMP MAIN LUGS, 40 AMP MAIN BREAKER

CIRCLE AROUND CIRCUIT No. INDICATES HANDLE LOCKING DEVICE  
 \* INDICATES SHUNT TRIP

CCT	DESCRIPTION	VOLT-AMPERES			POLE AMP	WIRE SIZE	AMP POLE	VOLT-AMPERES			DESCRIPTION	CCT	
		A	B	C				A	B	C			
1	RECEPTACLE	100			1	15	12	12	15	1	100	RECEPTACLE	2
3	SPARE				1	15	12	12	15	1		SPARE	4
5	SPARE				1	15	12	12	15	1		SPARE	6
7	SPARE				1	15	12	12	15	1		SPARE	8
9	SPARE				1	15		12	15	1		SPARE	10
11	SPARE				1	15						SPACE	12
13												SPACE	14
15												SPACE	16
17												SPACE	18
19												SPACE	20
21												SPACE	22
23												SPACE	24
SUB-TOTAL VA		100	0	100			100	200	0				
GRAND TOTAL VA 1650		DEMAND FACTOR 90 %			TOTAL AMPERES 4.5A								

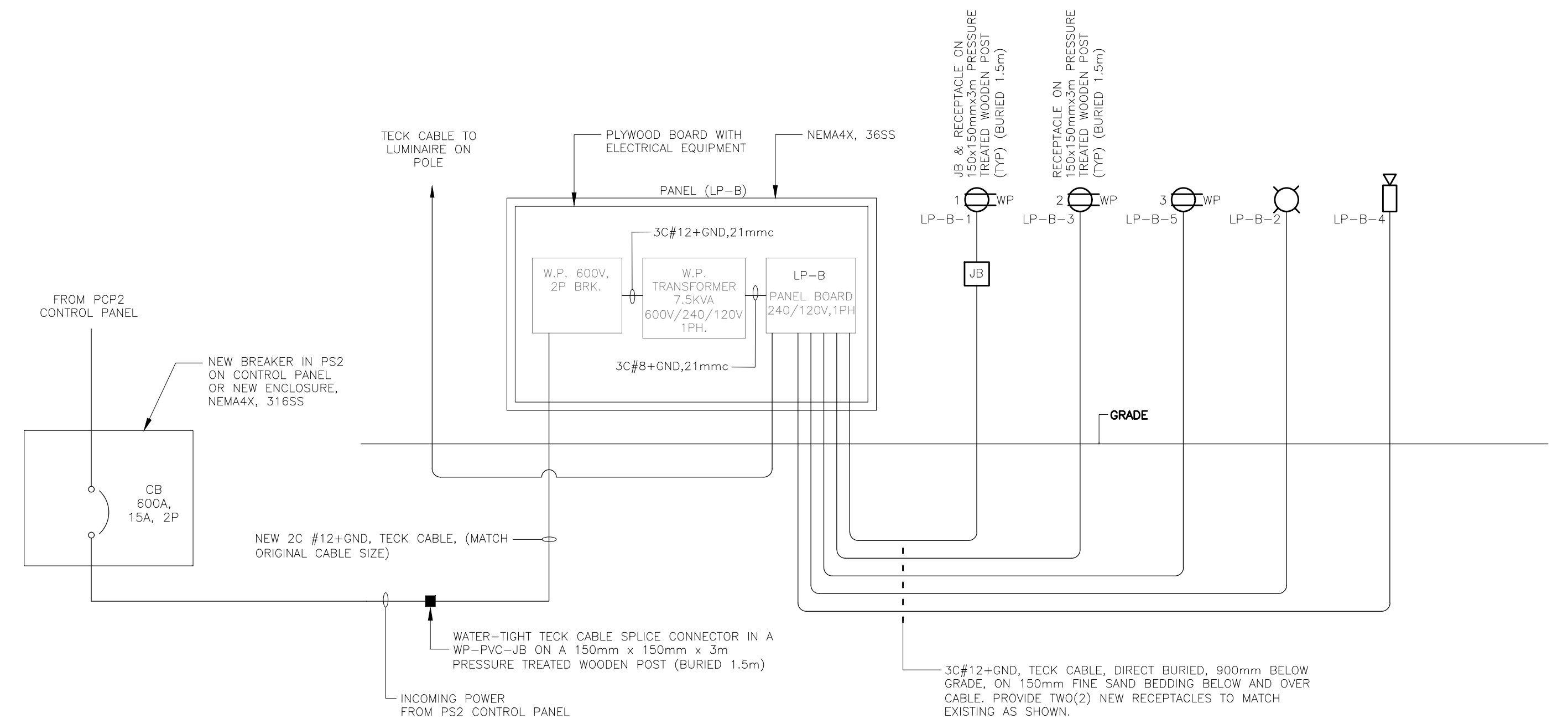
**PANELBOARD SCHEDULES**

N.T.S.



**PCP 3 SINGLE LINE DIAGRAM**

N.T.S.



**BLOCK WIRING DIAGRAM**

N.T.S.

**LEGEND :**

- DUPLEX 15A, 125 VOLT RECEPTACLE IN WP ENCLOSURE. REMOVE, RELOCATE AND PROVIDE NEW PRESSURE TREATED POSTS AS SHOWN. WP DESIGNATED WEATHER PROOF.
- WATER-TIGHT JUNCTION BOX. REMOVE AND RELOCATE ON NEW POST AS SHOWN.
- POLE MOUNTED LUMINAIRE
- POLE MOUNTED CAMERA

SEAL

CLIENT



CONSULTANT



WSP CANADA INC.  
 1821 PROVINCIAL ROAD, SUITE 100  
 WINDSOR, ONTARIO N8W 5V7  
 CANADA  
 [+1] (226) 826 0702

PROJECT  
**ESSEX-WINDSOR REGIONAL LANDFILL  
 CELL 5 NORTH CONSTRUCTION**

TITLE  
**LEGEND, ELECTRICAL SCHEMATICS,  
 PANEL SCHEDULES AND DETAILS**

REV.	YYYY-MM-DD	DESCRIPTION	DESIGNED	PREPARED	REVIEWED	APPROVED
B	2024-04-12	ISSUED FOR TENDER	MN	MK	MN	MN
A	2023-02-28	ISSUED FOR CLIENT REVIEW	MN	MK	MN	MN

PROJECT NO.	CONTROL	REV.	29 of 29	DRAWING
111-53107-10	2001	B		E02

25 mm IF THIS MEASUREMENT DOES NOT MATCH WHAT IS SHOWN, THE SHEET SIZE HAS BEEN MODIFIED FROM ANSI D